

APPROVED (04 December 2024)
Physical Planning & Urban Development Department
Ministry of Housing, Land and Urban Development

PROPOSED LAND USE

- 38. RESIDENTIAL PLOTS
- 38.1 PUBLIC HOUSING UNITS
- INSTITUTIONAL & COMMUNITY FACILITIES
- 39 PUBLIC ADMINISTRATION
 - 39.1 - Council Office
 - 39.2 - M.Court
- 40 EDUCATION
 - 40.1.1 Preschool
 - 40.1.2 Preschool
 - 40.1.3 Secondary School
- 41 HEALTH
 - 41.1 Health Center
- 43 ISLAMIC AFFAIRS
 - 43.2.1 Friday Mosque
 - 43.2.2 Friday Mosque
 - 43.3.1 Mosque
 - 43.3.2 Mosque
- 44 PRIVATE ORGANIZATION
 - 44.1 - Club Office
- 46 POLICE
 - 46.2 - Police Post
 - 46.4 - Island Police Station
- 48 ARTS, CULTURE & HERITAGE
 - 48.4 Cultural Village Park
- SPORTS & RECREATION
- 50 SPORTS STADIUM / COURT
 - 50.1 Football Stadium
 - 50.6 Sports Arena
- 52 PARKS & OPEN SPACES
 - 52.1 Children's Park
 - 52.2 Outdoor Gym
 - 52.3 Pocket Park's
- UTILITY & MUNICIPAL
- 53 UTILITY
 - 53.2 Power House
 - 53.6 RO Plant
- 54 MUNICIPAL
 - 54.1 Cemetery
 - 54.2 Waste Management Center
 - 54.3 STP
 - 54.5 - Ramp
- TRANSPORTATION
- 56 FERRY TERMINAL
 - 56.3 - Island Ferry Terminal
- 58 LAND TRANSPORTATION
 - 58.1 - Parking's
- COMMERCIAL USE
- 59 SHOPS
 - 59.1 Neighborhood Shops
 - 59.6 Super Market
- 60 MARKETS
 - 60.2 Fish Market (No permanent structure in Holhudhoo)
 - 61 Ice Plant
 - 63 Fuel Storage
 - 63.1.1 Fuel Storage
 - 63.1.2 Fuel Storage
 - 63.1.3 Fuel Storage
 - 64 Patrol Station
- INDUSTRIAL ZONE
- 67 HEAVY
 - 67.1 Slipway
 - 67.2 Boat Building and Repair
- 68 LIGHT
 - 68.1 Storage / Warehouse
 - 68.2 Workshop
- AGRICULTURE AND MARICULTURE
- 69 land
 - 69.2 Farmland
 - 69.4 Agriculture Lease Land
- TOURISM AREA
 - 71 - Guest House
- OPEN GREEN BUFFER AREA
 - 74 - Green buffer Area
- RESERVED FOR FUTURE NON RESIDENTIAL USE
 - 76 - Reserved for Future non Residential Areas
- ENVIRONMENT PROTECTION ZONE (EPZ)

PHYSICAL FEATURES

- HARBOUR BASIN (RGB 125,187,252)
- HARBOUR LOADING / UNLOADING 15M (RGB 233,222,211)
- RECLAMATION
- REEF LINE (RGB 0,255,255)
- SHORE LINE (RGB 0,0,255)
- JURISTRDICTION LINE
- REVETMENT / GROYNES (RGB 101,101,101)
- JETTY (RGB 255,0,0)
- SIGNIFICANT TREES (RGB 0,255,0)

ROAD NETWORK

- 10M - 12.2M PRIMARY ROAD
- 9M - 7.5M PRIMARY ROAD
- 6M SECONDARY ROAD

EXISTING LAND USE

- RESIDENTIAL AREA
- INSTITUTIONAL & COMMUNITY ZONE
 - 2 PUBLIC ADMINISTRATION
 - 2.1.1 Council Idhaara
 - 2.1.2 Council House Holhuhiyaa
 - 2.1.3 Council House Holhuveshi
 - 2.1.4 Council Storage
 - 2.1.5 Council Storage
 - 2.1.6 Council House Holhuvehi (Temporary Police Station)
 - 2.2 JUDICIAL
 - 2.2 M.Court
 - 3. EDUCATION
 - 3.1.1 Meyna School
 - 3.1.2 Meyna School PTA Office
 - 3.1.3 Pre-school
 - 3.1.4 Meyna School Monument
 - 3.1.5 Meyna School New Building
 - 4 HEALTH
 - 4.1 Health Centre
 - 4.3 Pharmacy
 - 6 ISLAMIC AFFAIRS
 - 6.1 Mosque (Iuthizaazu)
 - 6.2.1 Friday Mosque (Ikhulaas)
 - 6.2.2 Friday Mosque (Thauheedhu)
 - 12 COMMUNITY CENTRE
 - 12 Social Centre
- SPORTS AND RECREATIONAL ZONE
 - 13 SPORTS STADIUM / COURT
 - 13.1 Football Stadium
 - 13.4 Badminton Court
 - 13.5 Futsal Ground
 - 13.6 Restream (Boalhage)
 - 15 PARKS & OPEN SPACES
 - 15.1 Children's Park
 - 15.2 Outdoor Gym
 - 15.5 Artificial Beach
 - 15.7.1 Ba'ndharu Maizaan
 - 15.7.2 Hul'ingu Maizaan
 - 15.7.3 Dhekunu Maizaan
- UTILITIES AND MUNICIPAL ZONE
 - 16 UTILITY
 - 16.1.1 Dhiraagu ANT
 - 16.1.2 Ooredoo ANT
 - 16.2 Power House
 - 16.6.1 RO. Plant
 - 16.6.2 RO. Plant
 - 17 MUNICIPAL
 - 17.1 Cemetery
 - 17.2 Waste Management
 - 17.4.1 Pump Stations
 - 17.4.2 Pump Stations
 - 17.5 Water Tank
 - 17.6 Hinavaage
- COMMERCIAL USE
 - 22 SHOPS
 - 22.1 Neighborhood Shop
 - 30 BANKING
 - 30.1 Bank Branch
 - 30.2 ATM
- INDUSTRIAL ZONE
 - 31 HEAVY
 - 31.2 Boat Building & Repair



NOTE: ALL MEASUREMENTS SHOULD BE CHECKED PHYSICALLY ON THE GROUND BEFORE LAND ALLOCATION.



SECRETARIAT of the SOUTH MILADHUNMADULU HOLHUDHOO COUNCIL

MOOSA KALAYFAANU MAGU, HOLHUDHOO REPUBLIC OF MALDIVES
 TEL: 656 0009, 656 0009, FAX: 656 0009

TITLE:
 N. HOLHUMEEDHOO PLAN 2024

PROJECT:
 N. HOLHUMEEDHOO LAND USE PLAN 2024

DRAWN BY: AHMED NASEEM IBRAHIM
 9429837, 7437309

CHECKED BY: Naseem

SURVEYED BY: Naseem

SCALE: 1

DATE: 20 Nov 2024

EXISTING LAND USE

- RESIDENTIAL AREA
- INSTITUTIONAL & COMMUNITY ZONE
 - 2 PUBLIC ADMINISTRATION
 - 2.1.1 Council Idhaara
 - 2.1.2 Council House Holhuhiyaa
 - 2.1.3 Council HouseHolhuveshi
 - 2.1.4 Council Storage
 - 2.1.5 Council Storage
 - 2.1.6 Council House Holhuvehi (Temporary Police Station)
 - 2.2 JUDICIAL
 - 2.2 M.Court
 - 3. EDUCATION
 - 3.1.1 Meyna School
 - 3.1.2 Meyna School PTA Office
 - 3.1.3 Pre-school
 - 3.1.4 Meyna School Monument
 - 3.1.5 Meyna School New Building
 - 4 HEALTH
 - 4.1 Health Centre
 - 4.3 Pharmacy
 - 6 ISLAMIC AFFAIRS
 - 6.1 Mosque (Iuthizaazu)
 - 6.2.1 Friday Mosque (Ikhulaas)
 - 6.2.2 Friday Mosque (Thauheedhu)
 - 12 COMMUNITY CENTRE
 - 12 Social Centre
- SPORTS AND RECREATIONAL ZONE
 - 13 SPORTS STADIUM / COURT
 - 13.1 Football Stadium
 - 13.4 Badminton Court
 - 13.5 Futsal Ground
 - 13.6 Restream (Boalhage)
 - 15 PARKS & OPEN SPACES
 - 15.1 Children's Park
 - 15.2 Outdoor Gym
 - 15.5 Artificial Beach
 - 15.7.1 Ba'ndharu Maizaan
 - 15.7.2 Hulh'ngu Maizaan
 - 15.7.3 Dhekunu Maizaan
- UTILITIES AND MUNICIPAL ZONE
 - 16 UTILITY
 - 16.1.1 Dhiraagu ANT
 - 16.1.2 Ooredoo ANT
 - 16.2 Power House
 - 16.6.1 RO. Plant
 - 16.6.2 RO. Plant
 - 17 MUNICIPAL
 - 17.1 Cemetery
 - 17.2 Waste Management
 - 17.4.1 Pump Stations
 - 17.4.2 Pump Stations
 - 17.5 Water Tank
 - 17.6 Hinavaage
- COMMERCIAL USE
 - 22 SHOPS
 - 22.1 Neighborhood Shop
 - 30 BANKING
 - 30.1 Bank Branch
 - 30.2 ATM
- INDUSTRIAL ZONE
 - 31 HEAVY
 - 31.2 Boat Building & Repair

PROPOSED LAND USE

- 38. RESIDENTIAL PLOTS
 - 38.1 PUBLIC HOUSING UNITS
 - INSTITUTIONAL & COMMUNITY FACILITIES
 - 41 HEALTH
 - 41.1 - Hospital Bin
 - 44 PRIVATE ORGANIZATION
 - 44.1 - Club Office
 - 46 POLICE
 - 46.4 - Island Police Station
 - SPORTS & RECREATION
 - 52 PARKSM & OPEN SPACES
 - 52.3 - Pocket Park's
 - UTILITY & MUNICIPAL
 - 54 MUNICIPAL
 - 54.5 - Ramp
 - TRANSPORTATION
 - 58 LAND TRANSPORTATION
 - 58.1 - Parking's
 - COMMERCIAL USE
 - 59 SHOPS
 - 59.3 Retail Shops
 - 60 MARKETS
 - 60.2 Fish Market (No permanent structure)
 - 63.1.1 Fuel Storage
 - 63.1.2 Fuel Storage
 - 63.1.3 Fuel Storage
 - INDUSTRIAL ZONE
 - 67 HEAVY
 - 67.2 - Boat Building & Repair
 - OPEN GREEN BUFFER AREA
 - 74 - GREEN BUFFER AREA
 - RESERVED FOR FUTURE NON RESIDENTIAL USE
 - 76 - RESERVED FOR FUTURE NON RESIDENTIAL AREAS
 - ENVIRONMENT PROTECTION ZONE (EPZ)
- PHYSICAL FEATURES**
- HARBOUR BASIN (RGB 125,187,252)
 - HARBOUR LOADING / UNLOADING 15M (RGB 233,222,211)
 - RECLAMATION
 - REEF LINE (RGB 0,255,255)
 - SHORE LINE (RGB 0,0,255)
 - JURISTRICITION LINE
 - REVETMENT / GROYNES (RGB 101,101,101)
 - JETTY (RGB 255,0,0)
 - SIGNIFICANT TREES (RGB 0,255,0)



NOTE: ALL MEASUREMENTS SHOULD BE CHECKED PHYSICALLY ON THE GROUND BEFORE LAND ALLOCATION.

SECRETARIAT of the SOUTH MILADHUNMADULU HOLHUDHOO COUNCIL

MOOSA KALAYFAANU MAGU, HOLHUDHOO REPUBLIC OF MALDIVES
 TEL: 656 0009, 656 0009. FAX: 656 0009

TITLE:
 N. HOLHUDHOO LAND USE PLAN 2024

PROJECT:
 N. HOLHUDHOO LAND USE PLAN 2024

DRAWN BY: AHMED NASEEM IBRAHIM
 9429837, 7437309

CHECKED BY: Naseem

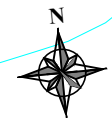
SURVEYED BY: Naseem

SCALE: 1

DATE: 20 Nov 2024

PROPOSED LAND USE

- 38. RESIDENTIAL PLOTS
 - 38.1 PUBLIC HOUSING UNITS
 - INSTITUTIONAL & COMMUNITY FACILITIES
 - 39 PUBLIC ADMINISTRATION
 - 39.1 - Council Office
 - 39.2 - M.Court
 - 40 EDUCATION
 - 40.1.1 Preschool
 - 40.1.2 Preschool
 - 40.1.3 Secondary School
 - 41 HEALTH
 - 41.1 Health Center
 - 43 ISLAMIC AFFAIRS
 - 43.2.1 Friday Mosque
 - 43.2.2 Friday Mosque
 - 43.3.1 Mosque
 - 43.3.2 Mosque
 - 46 POLICE
 - 46.2 Police Post
 - 48 ARTS, CULTURE & HERITAGE
 - 48.4 Cultural Village Park
 - SPORTS & RECREATION
 - 50 SPORTS STADIUM / COURT
 - 50.1 Football Stadium
 - 50.6 Sports Arena
 - 52 PARKS & OPEN SPACES
 - 52.1 Children's Park
 - 52.2 Outdoor Gym
 - 52.3 Pocket Park's
 - UTILITY & MUNICIPAL
 - 53 UTILITY
 - 53.2 Power House
 - 53.6 RO Plant
 - 54 MUNICIPAL
 - 54.1 Cemetery
 - 54.2 Waste Management Center
 - 54.3 STP
 - TRANSPORTATION
 - 56.3 - Island Ferry Terminal
 - COMMERCIAL USE
 - 59 SHOPS
 - 59.1 Neighborhood Shops
 - 59.6 Super Market
 - 60 MARKETS
 - 60.2 Fish Market
 - 61 Ice Plant
 - 63 Fuel Storage
 - 64 Patrol Station
 - INDUSTRIAL ZONE
 - 67 HEAVY
 - 67.1 Slipway
 - 67.2 Boat Building and Repair
 - 68 LIGHT
 - 68.1 Storage / Warehouse
 - 68.2 Workshop
 - AGRICULTURE AND MARICULTURE
 - 69 land
 - 69.2 Farmland
 - 69.4 Agriculture Lease Land
 - TOURISM AREA
 - 71 - Guest House
 - OPEN GREEN BUFFER AREA
 - 74 - Green buffer Area
 - RESERVED FOR FUTURE NON RESIDENTIAL USE
 - 76 - Reserved for Future non Residential Areas
 - ENVIRONMENT PROTECTION ZONE (EPZ)
- PHYSICAL FEATURES**
- HARBOUR BASIN (RGB 125,187,252)
 - HARBOUR LOADING / UNLOADING 15M (RGB 233,222,211)
 - RECLAMATION
 - REEF LINE (RGB 0,255,255)
 - SHORE LINE (RGB 0,0,255)
 - JURISTRICITION LINE
 - REVETMENT / GROYNES (RGB 101,101,101)
 - JETTY (RGB 255,0,0)
 - SIGNIFICANT TREES (RGB 0,255,0)
 - ONGOING CONCEPT (Not finalized)
- ROAD NETWORK**
- 10M - 12.2M PRIMARY ROAD
 - 9M - 7.5M PRIMARY ROAD
 - 6M SECONDARY ROAD



NOTE: ALL MEASUREMENTS SHOULD BE CHECKED PHYSICALLY ON THE GROUND BEFORE LAND ALLOCATION.



SECRETARIAT of the SOUTH MILADHUNMADULU HOLHUDHOO COUNCIL

MOOSA KALAYFAANU MAGU, HOLHUDHOO REPUBLIC OF MALDIVES
 TEL: 656 0009, 656 0009, FAX: 656 0009

TITLE:
 N. HOLHUMEEDHOO PLAN 2024

PROJECT:
 N. HOLHUMEEDHOO LAND USE PLAN 2024

DRAWN BY: AHMED NASEEM IBRAHIM
 9429837, 7437309

CHECKED BY: Naseem

SURVEYED BY: Naseem

SCALE: 1

DATE: 20 Nov 2024